



47 Bure Haven Drive



47 Bure Haven Drive

Christchurch, BH23 4BT

£599,995

Located in a desirable area of Mudeford is this well-presented detached bungalow. The property comprises of two double bedrooms, a spacious sized double-aspect lounge and a kitchen that leads onto the conservatory via a stable door. The bathroom comprises of a bath with a separate shower cubicle. This property has the benefit of having a detached garage with power and water, a generous sized private rear garden with a wooden barn style shed. The front garden is brick paviour with feature flower beds. Mudeford Quay, Avon Beach and Steamer Point leading to Highcliffe Castle are just a short distance away. Stanpit Marsh Nature Reserve is also within easy walking distance. Local shops can be found in Mudeford with more comprehensive facilities in the towns of Christchurch and Highcliffe.



Hallway 10' 9" x 4' 6" (3.27m x 1.37m)

Living Room 21' 4" x 11' 7" (6.50m x 3.53m)

Bedroom 1 14' 8" x 10' 6" (4.47m x 3.20m)

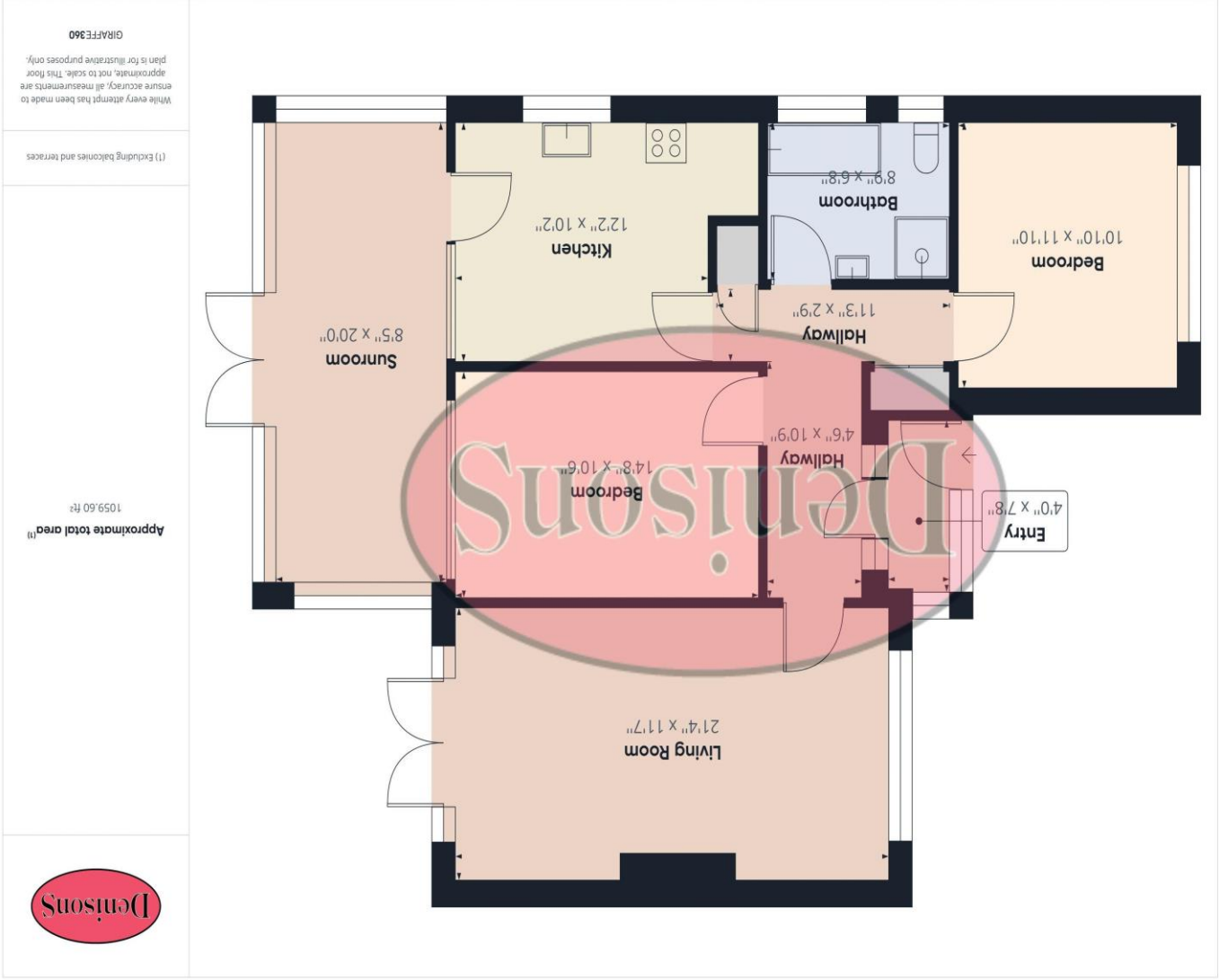
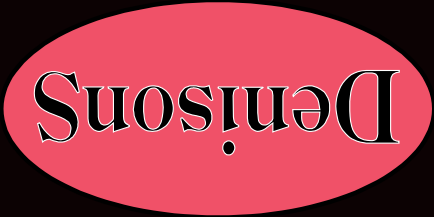
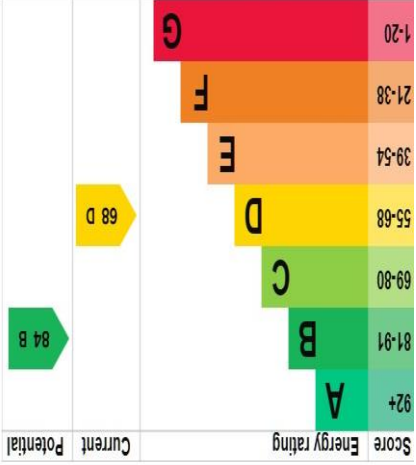
Bedroom 2 11' 10" x 10' 10" (3.60m x 3.30m)

Kitchen 12' 2" x 10' 2" (3.71m x 3.10m)

Conservatory 20' 0" x 8' 5" (6.09m x 2.56m)

Bathroom 8' 9" x 6' 8" (2.66m x 2.03m)





Christchurch
12 Castle Street, Christchurch BH23 1DT
01202 484748
christchurch@denisons.com

Mayfair
Cashel House, London, W1U 3JT
0870 112 7099
mayfair@denisons.com

www.denisons.com

Denisons for themselves and for the Vendors or lessors of this property, whose Agents they are, give notice that these particulars are produced in good faith, are set out as a general guide only and do not constitute any part of a Contract. No person in the employment of Denisons has any authority to make or give any representation or warranty whatever in relation to this property.